

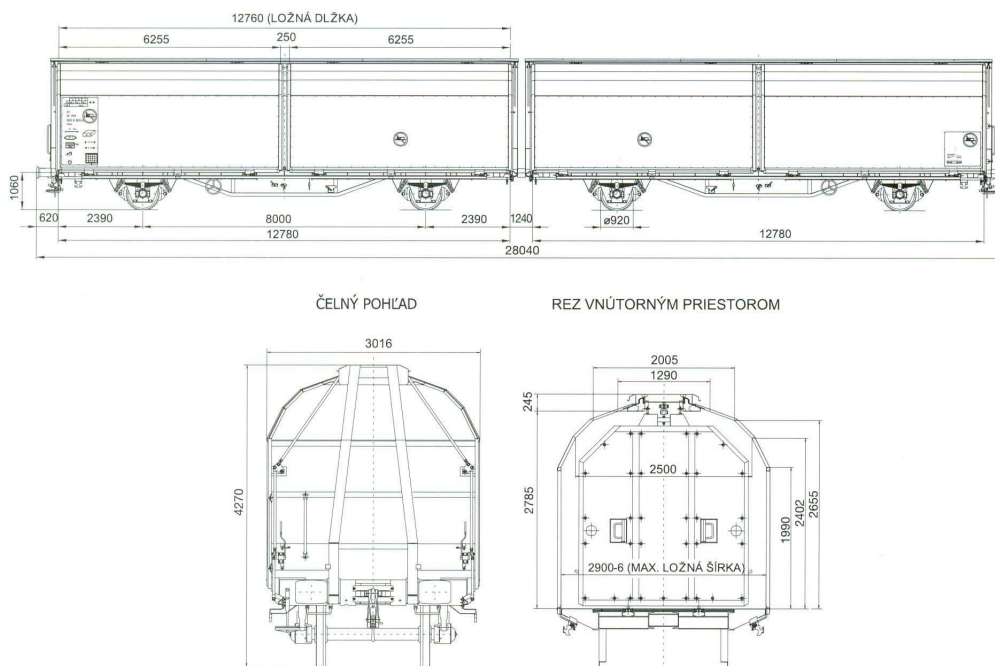
Hirrs



Use:

This wagon unit is intended to carry commodities in crates and large space lump commodities as well as commodities requiring weather protection. Wagon is fitted to quick loading and unloading due to sliding walls system enabling access from both sides even when mechanical devices are in use.





Wagon technical parameters

Wagon series		Hirrs
Digit interval		2920
Construction group		12
Interoperability		21
Number of axles		4
Wagon length over the buffers		2 x 14,02 m
Wagon tare		30,75 t
Loading capacity	A	33,00 t
	B	41,00 t
	C	49,00 t
Loading length		2 x 12,76 m
Loading width		2,90 m
Loading surface		2 x 37,00 m ²
Ložná height		2,07 – 2,67 m
Axle base / pivot pins distance		2 x 8,00 m
Loading volume		2 x 98,00 m ³
Maximum loading capacity for evenly distributed freight		
Note		2 x 35 ks EUR-pallets