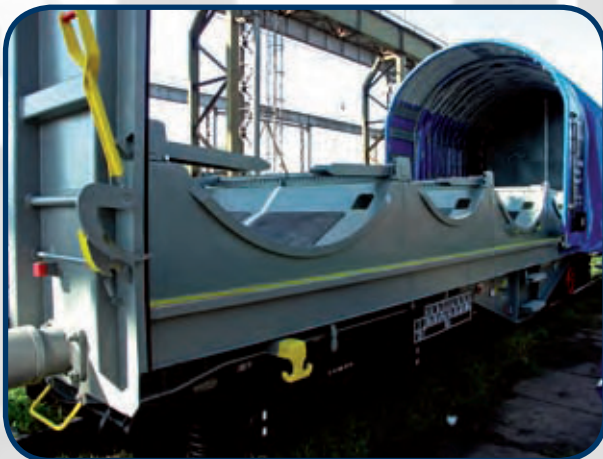


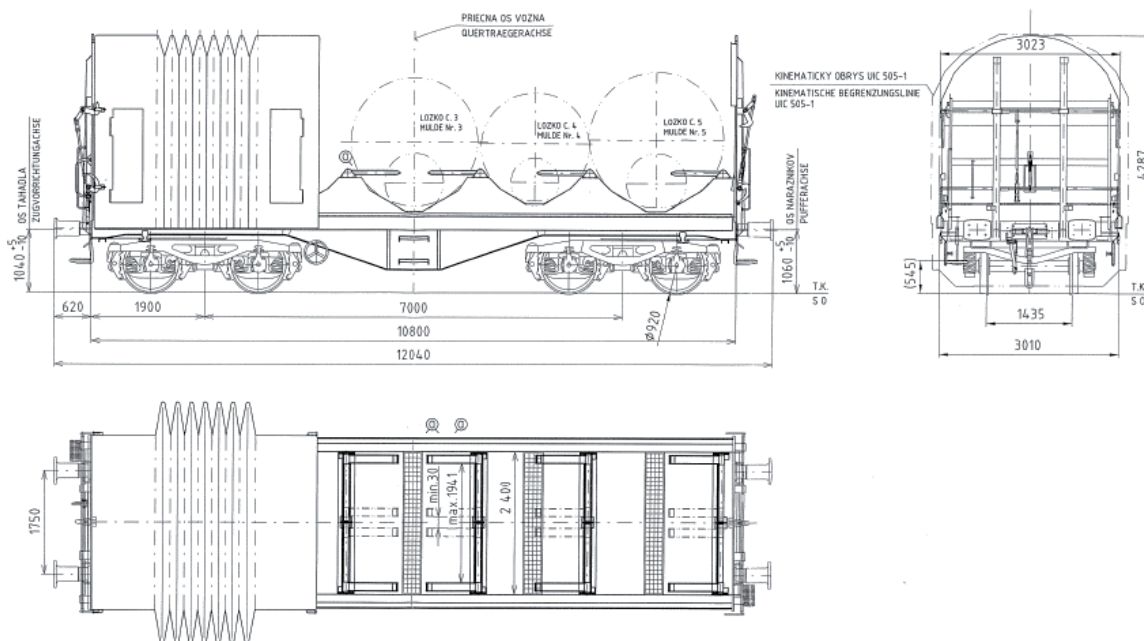
## Shimmns



### Use:

Wagon intended to carry thin steel tin coils. The bedding for tin coils are of different sizes which enables variable loading of coils of different diameters with taking advantage of maximum wagon loading capacity and provides shipped commodities protection against shocks. The wagon enables easy and safe handling with sliding sheet and provides reliable weather protection.





## Wagon technical parameters

Wagon series		Shimmns
Digit interval		4668
Construction group		55
Interoperability		31
Number of axles		4
Bogie type		Y 25
Wagon length over the buffers		12,04 m
Wagon tare		21,50 t
Loading capacity	A B <sub>1</sub>	38,60 t
	B <sub>2</sub>	50,40 t
	C <sub>2</sub>	55,40 t
	C <sub>3</sub> C <sub>4</sub>	60,40 t
	D <sub>2</sub>	55,40 t
	D <sub>3</sub>	65,00 t
	D <sub>4</sub>	68,40 t
Loading length between adjustable stanchions		0,30 – 1,94 m
Distance between floor and USR		1,06 m
Axle base / pivot pins distance		7,00 m
Note		
diameter of coils loadable in bearings 1, 5		1,00 – 2,25 m
diameter of coils loadable in bearings 2, 4		0,80 – 1,90 m
diameter of coils loadable in bearing 3		1,00 – 2,48 m
max. weight of coils loadable in bearings 1,5		37,00 t
max. weight of coils loadable in bearings 2,4		25,00 t
max. weight of coils loadable in bearing 3		40,00 t